



ÜRÜN BROŞÜRÜ  
PRODUCT BROCHURE

2010 / V1

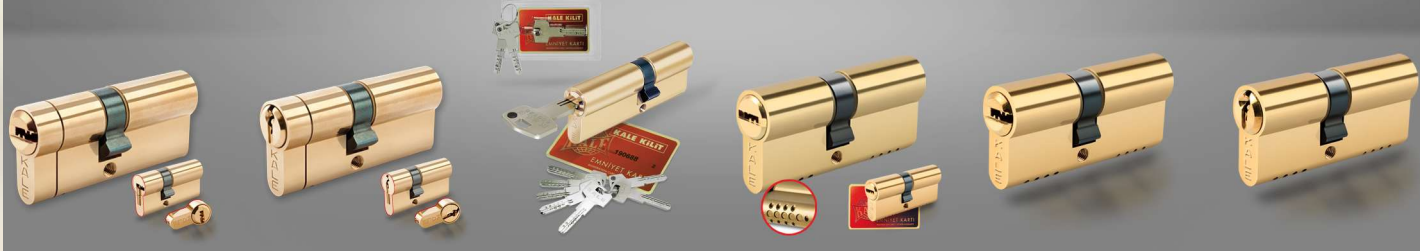
Atatürk Caddesi, Başak Sokak No:39  
34610 Güngören - İstanbul - Türkiye

Tel : (+90) 212. 557 34 00 (PBX)  
Fax: (+90) 212. 554 31 55 - 575 70 08

www.kalekilit.com.tr  
bilgi@kalekilit.com.tr



Kale Kilit A.Ş. bir Kale Endüstri Holding kuruluşudur. / Kale Kilit A.Ş. is a member of Kale Endüstri Holding Inc.  
> Kale Kilit, katalogdaki bilgileri haber vermeden değiştirme hakkına sahiptir. > Kale Kilit holds the right to change any information in this catalogue without notice.



**164 KTB S**

KALE TUZAKLI SİLİNDİR  
SİSTEM SİLİNDİR  
KALE TRAP CYLINDER  
SYSTEM CYLINDER

**164 KTB G**

KALE TUZAKLI SİLİNDİR  
STANDART SİLİNDİR  
KALE TRAP CYLINDER  
STANDARD CYLINDER

**164 OBS-BNE Z**

YÜKSEK GÜVENLİKLİ  
İNŞAAT SİLİNDİRİ  
HIGH SECURITY  
CONSTRUCTION  
CYLINDER

**164 OBS BE**

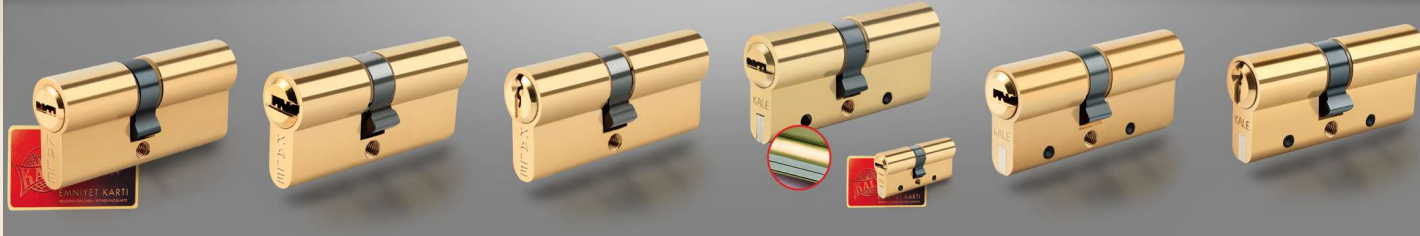
OTOMATİK BLOKAJ SİSTEMLİ  
BİLYALI SİLİNDİR, EMNİYET KARTLI.  
AUTOMATIC BLOCKAGE SYSTEM  
SYSTEM CYLINDER, WITH  
REGISTRATION CARD.

**164 OBS S**

OTOMATİK BLOKAJ SİSTEMLİ  
SİSTEM SİLİNDİR  
AUTOMATIC BLOCKAGE SYSTEM  
SYSTEM CYLINDER

**164 OBS G**

OTOMATİK BLOKAJ  
SİSTEMLİ STANDART  
SİLİNDİR  
AUTOMATIC BLOCKAGE  
SYSTEM STANDARD  
CYLINDER



**164 BNE**

BİLYALI SİLİNDİR, EMNİYET  
KARTLI  
HIGH SECURITY CYLINDER, WITH  
REGISTRATION CARD.

**164 SNC**

SİSTEM SİLİNDİR  
SYSTEM CYLINDER

**164 GNC**

STANDART SİLİNDİR  
STANDARD CYLINDER

**164 DBNE**

ÇELİK TAKVİYELİ SİLİNDİR  
BİLYALI SİLİNDİR EMNİYET  
KARTLI  
TEAR-RESISTANT CYLINDER  
HIGH SECURITY CYLINDER WITH  
REGISTRATION CARD.

**164 DSN**

ÇELİK TAKVİYELİ SİLİNDİR  
SİSTEM SİLİNDİR  
TEAR-RESISTANT CYLINDER  
SYSTEM CYLINDER

**164 DGN**

ÇELİK TAKVİYELİ SİLİNDİR  
STANDART SİLİNDİR  
TEAR-RESISTANT CYLINDER  
STANDARD CYLINDER



**164 GS**

STANDART SİLİNDİR, AÇIL DURUM  
FONKSİYONLU SİLİNDİRİN BİR  
TARAFINDAN ANAHTAR TAKILI  
OLSA BİLE DİĞER TARAFINDAN  
ANAHTAR İLE AÇILABİLİR.  
STANDARD CYLINDER WITH  
EMERGENCY FUNCTION,  
OPERABLE BY KEY EVEN IF A KEY  
IS INSERTED INTO OTHER SIDE OF  
THE CYLINDER

**164 BR / GR / SR**

YARIM TIP SİLİNDİR  
BİLYALI, STANDART, SİSTEM  
SİLİNDİR  
HALF TYPE CYLINDER  
HIGH SECURITY, STANDARD,  
SYSTEM CYLINDER

**164 BD / GD / SD**

YARIM TIP SİLİNDİR  
BİLYALI, STANDART, SİSTEM  
SİLİNDİR, AYARLANABİLİR  
AÇILIKAM  
HALF TYPE CYLINDER  
HIGH SECURITY, STANDARD,  
SYSTEM CYLINDER,  
ADJUSTABLE ANGLED CAM

**164 M**

MANDALLI YARIM TIP  
SİLİNDİR  
ANAHTARSIZ,  
HALF TYPE CYLINDER  
WITH THUMB  
WITHOUT KEY.

**164 RM**

MANDALLI YARIM TIP  
SİLİNDİR (YARIK BAŞLI)  
ANAHTARSIZ,  
HALF TYPE CYLINDER WITH  
THUMB (WITH EMERGENCY  
SLOT), WITHOUT KEY.

**164 UY / US**

TIRAJLI KİLİT SİLİNDİR SETİ  
SİSTEM / STANDART SİLİNDİR  
CYLINDER SET FOR RIM LOCK  
SYSTEM / STANDARD  
CYLINDER



**164 F3/F5**

SİLİNDİR  
PRAZİS SİLİNDİR  
CYLINDER  
CROSS KEY TYPE CYLINDER

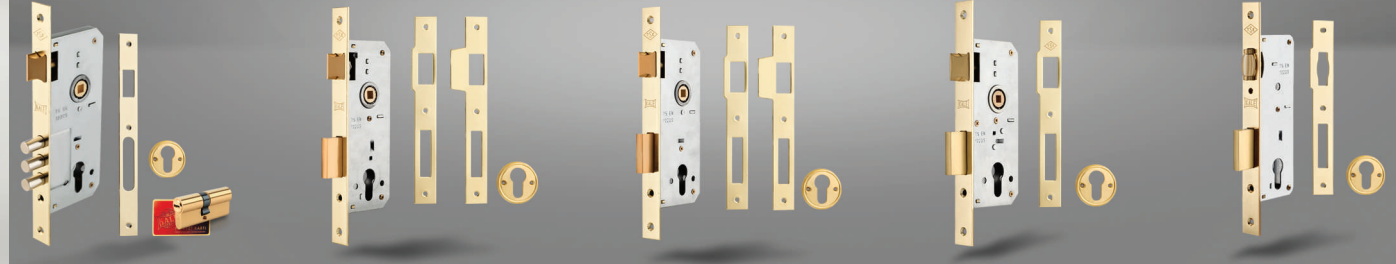
BÜTÜN SİLİNDİR TİPLERİNDE  
SATEN NİKEL KAPLAMA  
SEÇENEĞİ BULUNMAKTADIR.  
SATIN NICKEL PLATED IS  
AVAILABLE FOR ALL TYPE OF  
CYLINDERS

MANDAL TIP TOPUZ  
THUMB KNOB

SİLİNDİRİK TOPUZ  
CYLINDRICAL KNOB

YASSI TOPUZ  
FLAT TYPE KNOB

AĞ TIP TOPUZ  
WEB TYPE KNOB



**2000 (152-3 MR)**

SİLİNDİRLİ GÖMME KİLİT (GENİŞ TIP)  
AHSAP KAPILAR İÇİN. RULMANLI.  
MORTISE LOCK WITH CYLINDER  
(WIDE TYPE), FOR WOODEN DOORS.  
WITH BALL BEARING.

**152 R**

SİLİNDİRLİ GÖMME KİLİT  
(GENİŞ TIP), AHSAP KAPILAR  
İÇİN. RULMANLI.  
MORTISE LOCK WITH  
CYLINDER, (WIDE TYPE)  
FOR WOODEN DOORS.  
WITH BALL BEARING.

**152 R 3T**

SİLİNDİRLİ GÖMME KİLİT  
(GENİŞ TIP), AHSAP KAPILAR  
İÇİN. RULMANLI. ÜÇ TURLU.  
MORTISE LOCK WITH  
CYLINDER (WIDE TYPE)  
FOR WOODEN DOORS.  
WITH BALL BEARING, THREE  
THROWS.

**196 R 40**

SİLİNDİRLİ GÖMME KİLİT (GENİŞ  
TIP), AHSAP KAPILAR İÇİN.  
RULMANLI.  
MORTISE LOCK WITH CYLINDER  
(WIDE TYPE) FOR WOODEN  
AND ALUMINIUM DOORS. WITH  
BALL BEARING.

**154**

SİLİNDİRLİ GÖMME KİLİT  
(GENİŞ TIP), AHSAP  
ÇARPMA KAPILAR İÇİN.  
MORTISE LOCK WITH  
CYLINDER (WIDE TYPE).  
FOR WOODEN AND  
ALUMINIUM SWINGING  
DOORS.



**2000 F**

PRAZİS SİLİNDİRLİ GÖMME KİLİT  
(GENİŞ TIP), AHSAP KAPILAR İÇİN.  
RULMANLI.  
MORTISE LOCK WITH CROSS KEY  
TYPE CYLINDER (WIDE TYPE), FOR  
WOODEN DOORS, WITH BALL  
BEARING.

**182**

OTOMATİK KİLİTLEMELİ SİLİNDİRLİ  
GÖMME KİLİT (GENİŞ TIP).  
MANDAL VE SÜRGÜ OTOMATİK  
KİLİTLEMELİ. AHSAP KAPILAR İÇİN.  
MORTISE LOCK WITH AUTOMATIC  
LOCKING FUNCTION (WIDE TYPE),  
WITH AUTOMATIC LOCKING OF  
LATCH AND DEADBOLT, FOR  
WOODEN DOORS.

**153 U**

SİLİNDİRLİ GÖMME KİLİT  
(DAR TIP), ALÜMİNYUM  
KAPILAR İÇİN.  
MORTISE LOCK WITH  
CYLINDER (NARROW TYPE)  
FOR ALUMINIUM DOORS.

**153**

SİLİNDİRLİ GÖMME KİLİT  
(DAR TIP), ALÜMİNYUM  
KAPILAR İÇİN. KARŞILIKSIZ  
VE ROZETSİZ  
MORTISE LOCK WITH  
CYLINDER (NARROW TYPE)  
FOR ALUMINIUM DOORS,  
WITHOUT STRIKING PLATE  
AND ROSETTE.

**155 U**

SİLİNDİRLİ GÖMME KİLİT (DAR TIP)  
ALÜMİNYUM ÇARPMA KAPILAR  
İÇİN.  
MORTISE LOCK WITH CYLINDER  
(NARROW TYPE), FOR WOODEN  
AND ALUMINIUM SWINGING  
DOORS.

**155**

SİLİNDİRLİ GÖMME KİLİT  
(DAR TIP), ALÜMİNYUM  
ÇARPMA KAPILAR İÇİN.  
KARŞILIKSIZ VE ROZETSİZ.  
MORTISE LOCK WITH  
CYLINDER (NARROW TYPE),  
FOR ALUMINIUM SWINGING  
DOORS, WITHOUT STRIKING  
PLATE AND ROSETTE



**255**

SİLİNDİRLİ GÖMME KİLİT (DAR  
TIP), DÖŞME SÜRGÜLÜ,  
ALÜMİNYUM ÇARPMA  
KAPILAR İÇİN.  
MORTISE LOCK WITH  
CYLINDER (NARROW TYPE)  
TIPPING DEADBOLT, FOR  
ALUMINIUM SWINGING  
DOORS.

**253**

SİLİNDİRLİ GÖMME KİLİT  
(DAR TIP), DÖŞME  
SÜRGÜLÜ, ALÜMİNYUM  
KAPILAR İÇİN.  
MORTISE LOCK WITH  
CYLINDER (NARROW  
TYPE), TIPPING  
DEADBOLT, FOR  
ALUMINIUM DOORS.

**201 F**

PRAZİS SİLİNDİRLİ GÖMME KİLİT  
(DAR TIP), ALÜMİNYUM SÜRME  
KAPILAR İÇİN.  
MORTISE LOCK WITH CROSS  
KEY TYPE CYLINDER (NARROW  
TYPE), FOR ALUMINIUM  
SLIDING DOORS.

**201-20**

SİLİNDİRLİ GÖMME KİLİT (DAR  
TIP), ALÜMİNYUM SÜRME  
KAPILAR İÇİN.  
MORTISE LOCK WITH CYLINDER  
(NARROW TYPE), FOR  
ALUMINIUM SLIDING DOORS.

**201-40**

SİLİNDİRLİ GÖMME KİLİT (GENİŞ  
TIP), ALÜMİNYUM SÜRME  
KAPILAR İÇİN.  
MORTISE LOCK WITH CYLINDER  
(WIDE TYPE), FOR ALUMINIUM  
SLIDING DOORS.



**153 P**

SİLİNDİRLİ GÖMME KİLİT (DAR  
TIP), PVC KAPILAR İÇİN.  
MORTISE LOCK WITH CYLINDER  
(NARROW TYPE)  
FOR PVC DOORS.

**155 P**

SİLİNDİRLİ GÖMME KİLİT (DAR  
TIP), PVC ÇARPMA KAPILAR  
İÇİN.  
MORTISE LOCK WITH  
CYLINDER (NARROW TYPE)  
FOR PVC SWINGING DOORS.

**192 P**

SİLİNDİRLİ GÖMME KİLİT  
(GENİŞ TIP), PVC KAPILAR İÇİN.  
RULMANLI.  
MORTISE LOCK WITH  
CYLINDER (WIDE TYPE)  
FOR PVC DOORS.

**152 RP**

SİLİNDİRLİ GÖMME KİLİT (GENİŞ  
TIP), PVC KAPILAR İÇİN.  
RULMANLI.  
MORTISE LOCK WITH CYLINDER  
(WIDE TYPE), FOR PVC DOORS,  
WITH BALL BEARING.

**189 4M F**

PRAZİS SİLİNDİRLİ GÖMME  
EMNİYET KİLİDİ, AHSAP VE  
METAL KAPILAR İÇİN  
SAFETY MORTISE LOCK WITH  
CROSS KEY TYPE CYLINDER  
FOR WOODEN AND METAL  
DOORS



- 189 F**  
PRAZİS SİLİNDİRLİ GÖMME EMNİYET KİLİDİ, AĖŞAP VE METAL KAPILAR İÇİN  
SAFETY MORTISE LOCK WITH CROSS KEY TYPE CYLINDER FOR WOODEN AND METAL DOORS
- 189 3M F**  
PRAZİS SİLİNDİRLİ GÖMME EMNİYET KİLİDİ, AĖŞAP VE METAL KAPILAR İÇİN  
SAFETY MORTISE LOCK WITH CROSS KEY TYPE CYLINDER, FOR WOODEN AND METAL DOORS
- 189 3M**  
SİLİNDİRLİ GÖMME EMNİYET KİLİDİ, AĖŞAP VE METAL KAPILAR İÇİN  
SAFETY MORTISE LOCK WITH CYLINDER, FOR WOODEN AND METAL DOORS
- 157**  
SİLİNDİRLİ GÖMME EMNİYET KİLİDİ, AĖŞAP VE METAL KAPILAR İÇİN  
SAFETY MORTISE LOCK WITH CYLINDER, FOR WOODEN AND METAL DOORS
- 157 F**  
PRAZİS SİLİNDİRLİ GÖMME EMNİYET KİLİDİ, AĖŞAP VE METAL KAPILAR İÇİN  
SAFETY MORTISE LOCK WITH CROSS KEY TYPE CYLINDER FOR WOODEN AND METAL DOORS
- 156 F**  
PRAZİS SİLİNDİRLİ GÖMME EMNİYET KİLİDİ, AĖŞAP VE METAL KAPILAR İÇİN  
SAFETY MORTISE LOCK WITH CROSS KEY TYPE CYLINDER FOR WOODEN AND METAL DOORS



- 2001 AC / 2001 CC**  
DİŐTAN TAKMA TIRAJLI KİLİT / NO: 14-12, AĖŞAP VE METAL KAPILAR İÇİN. SABİT, SİSTEM SİLİNDİRLİ, ZİNCİRLİ.  
SURFACE MOUNT RIM LOCK / NO: 14-12, FOR WOODEN AND METAL DOORS. WITH FIXED, SYSTEM CYLINDER, WITH CHAIN.
- 2001 A / B / C**  
DİŐTAN TAKMA TIRAJLI KİLİT / NO: 14-10-12, AĖŞAP VE METAL KAPILAR İÇİN. SABİT, SİSTEM SİLİNDİRLİ.  
SURFACE MOUNT RIM LOCK / NO: 14-10-12, FOR WOODEN AND METAL DOORS. WITH FIXED, SYSTEM CYLINDER.
- 2001 A 3M / C 3M**  
DİŐTAN TAKMA TIRAJLI KİLİT / NO: 14-12, AĖŞAP VE METAL KAPILAR İÇİN. SABİT, SİSTEM SİLİNDİRLİ.  
SURFACE MOUNT RIM LOCK / NO: 14-12, FOR WOODEN & METAL DOORS. WITH FIXED, SYSTEM CYLINDER.
- 157 A / B / C**  
DİŐTAN TAKMA TIRAJLI KİLİT / NO: 14-10-12, AĖŞAP VE METAL KAPILAR İÇİN. SABİT VEYA KOVANLI STANDART SİLİNDİRLİ.  
SURFACE MOUNT RIM LOCK / NO: 14-10-12, FOR WOODEN AND METAL DOORS. WITH FIXED OR LOOSE STANDARD CYLINDER.
- 157 A 3M / C 3M**  
DİŐTAN TAKMA TIRAJLI KİLİT / NO: 14-12, AĖŞAP VE METAL KAPILAR İÇİN. SABİT VEYA KOVANLI STANDART SİLİNDİRLİ.  
SURFACE MOUNT RIM LOCK / NO: 14-12, FOR WOODEN AND METAL DOORS. WITH FIXED OR LOOSE STANDARD CYLINDER.
- 157/2001 AT / BT / CT**  
DİŐTAN TAKMA TIRAJLI KİLİT / NO: 14-10-12, AĖŞAP VE METAL KAPILAR İÇİN. SABİT VEYA KOVANLI KAPILAR İÇİN. SABİT VEYA KOVANLI STANDART SİLİNDİRLİ, TOPUZLU.  
SURFACE MOUNT RIM LOCK / NO: 14-10-12, FOR WOODEN AND METAL DOORS. WITH FIXED OR LOOSE STANDARD OR SYSTEM CYLINDER, WITH KNOB



- 157/2001 A 3MT/C 3MT**  
DİŐTAN TAKMA TIRAJLI KİLİT / NO: 14-12, AĖŞAP VE METAL KAPILAR İÇİN. SABİT VEYA KOVANLI STANDART SİLİNDİRLİ, TOPUZLU.  
SURFACE MOUNT RIM LOCK / NO: 14-12, FOR WOODEN AND METAL DOORS. WITH FIXED OR LOOSE STANDARD OR SYSTEM CYLINDER, WITH KNOB.
- 157 AC / CC**  
DİŐTAN TAKMA TIRAJLI KİLİT / NO: 14-12, AĖŞAP VE METAL KAPILAR İÇİN. SABİT VEYA KOVANLI STANDART SİLİNDİRLİ, ZİNCİRLİ.  
SURFACE MOUNT RIM LOCK / NO: 14-12, FOR WOODEN AND METAL DOORS. WITH FIXED OR LOOSE STANDARD CYLINDER, WITH CHAIN.
- 157 AG / 2001 AG**  
DİŐTAN TAKMA TIRAJLI KİLİT / NO: 14 AĖŞAP VE METAL KAPILAR İÇİN. SABİT VEYA KOVANLI STANDART SİLİNDİRLİ, KOL DELİKLİ.  
SURFACE MOUNT RIM LOCK / NO: 14 FOR WOODEN AND METAL DOORS, WITH FIXED OR LOOSE STANDARD OR SYSTEM CYLINDER, WITH SQUARE HANDLE HOLE.
- 157 AE**  
DİŐTAN TAKMA TIRAJLI KİLİT / NO: 14, AĖŞAP VE METAL KAPILAR İÇİN. SABİT VEYA KOVANLI STANDART SİLİNDİRLİ.  
SURFACE MOUNT RIM LOCK / NO: 14, FOR WOODEN AND METAL DOORS, WITH FIXED OR LOOSE STANDARD CYLINDER.
- 157 D**  
DİŐTAN TAKMA TIRAJLI KİLİT / NO: 14, AĖŞAP VE METAL KAPILAR İÇİN. SABİT VEYA KOVANLI STANDART SİLİNDİRLİ.  
SURFACE MOUNT RIM LOCK FOR WOODEN AND METAL DOORS, WITH FIXED OR LOOSE STANDARD, CYLINDER.
- 357 M**  
KALE OTOMAT/DİŐTAN TAKMA ELEKTRİKLİ TIRAJLI KİLİT / AĖŞAP VE METAL KAPILAR İÇİN. BUTONLU, MAKARALI.  
KALE SURFACE MOUNT ELECTRICAL RIM LOCK FOR WOODEN AND METAL DOORS, WITH PUSH BUTTON, WITH ROLLER.



- 357 MS**  
KALE OTOMAT/DİŐTAN TAKMA ELEKTRİKLİ TIRAJLI KİLİT. AĖŞAP VE METAL KAPILAR İÇİN. BUTONLU, MAKARALI.  
KALE SURFACE MOUNT ELECTRICAL RIM LOCK, FOR WOODEN AND METAL DOORS, WITH PUSH BUTTON, WITH ROLLER.
- 357 MD**  
KALE OTOMAT / DİŐTAN TAKMA ELEKTRİKLİ TIRAJLI KİLİT / AĖŞAP VE METAL KAPILAR İÇİN. BUTONLU, SİLİNDİRLİ, MAKARALI.  
KALE SURFACE MOUNT ELECTRICAL RIM LOCK, FOR WOODEN AND METAL DOORS, WITH PUSH BUTTON, WITH CYLINDER, WITH ROLLER.
- 167 B**  
DİŐTAN TAKMA EMNİYET KİLİDİ, AĖŞAP KAPILAR İÇİN. ZİNCİRLİ, ÇİFT YÖNLÜ SÜRGÜLÜ, SİLİNDİRLİ.  
SURFACE MOUNT SAFETY LOCK, FOR WOODEN DOORS, WITH CHAIN, DOUBLE SIDED DEADBOLT, WITH CYLINDER
- 167**  
DİŐTAN TAKMA EMNİYET KİLİDİ, AĖŞAP KAPILAR İÇİN. SABİT SİLİNDİRLİ.  
SURFACE MOUNT SAFETY LOCK, FOR WOODEN DOORS, WITH FIXED CYLINDER.
- 167 A**  
DİŐTAN TAKMA EMNİYET KİLİDİ, AĖŞAP KAPILAR İÇİN. SABİT SİLİNDİRLİ.  
SURFACE MOUNT SAFETY LOCK FOR WOODEN DOORS, WITH FIXED CYLINDER.
- 167 C**  
DİŐTAN TAKMA EMNİYET KİLİDİ, AĖŞAP KAPILAR İÇİN. ZİNCİRLİ, ÇİFT YÖNLÜ SÜRGÜLÜ, SİLİNDİRSİZ.  
SURFACE MOUNT SAFETY LOCK FOR WOODEN DOORS, WITH CHAIN, DOUBLE SIDED DEADBOLT, WITHOUT CYLINDER.



- 203**  
DİŐTAN TAKMA EMNİYET KİLİDİ AĖŞAP VE METAL KAPILAR İÇİN. EMNİYET KANCALI.  
SURFACE MOUNT SAFETY LOCK FOR WOODEN AND METAL DOORS, WITH SAFETY HOOK.
- 141**  
İÇ KAPI GÖMME KİLİDİ (GENİŐ TİP), AĖŞAP KAPILAR İÇİN. ROZETLİ KOLA UYGUN KİLİT  
INTERIOR MORTISE LOCK (WIDE TYPE), FOR WOODEN DOORS, COMPATIBLE WITH HANDLE ESCUTCHEON
- 151 R**  
İÇ KAPI GÖMME KİLİDİ AĖŞAP KAPILAR İÇİN. RULMANLI  
INTERIOR MORTISE LOCK FOR WOODEN DOORS, WITH BALL BEARING
- 151 RM**  
İÇ KAPI GÖMME KİLİDİ (KONVEKS TİP MANDALLI), AĖŞAP KAPILAR İÇİN. RULMANLI  
INTERIOR MORTISE LOCK (CONVEX TYPE LATCH), FOR WOODEN DOORS, WITH BALL BEARING
- 166 AR**  
İÇ KAPI GÖMME KİLİDİ (GENİŐ TİP), AĖŞAP KAPILAR İÇİN. RULMANLI  
INTERIOR MORTISE LOCK (WIDE TYPE), FOR WOODEN DOORS, WITH BALL BEARING
- 166 ARM**  
İÇ KAPI GÖMME KİLİDİ (GENİŐ TİP, KONVEKS TİP MANDALLI), AĖŞAP KAPILAR İÇİN. RULMANLI  
INTERIOR MORTISE LOCK (WIDE TYPE, CONVEX TYPE LATCH) FOR WOODEN DOORS, WITH BALL BEARING



- 151 / 158 K**  
İÇ KAPI GÖMME KİLİDİ (KONVEKS TİP MANDALLI) AĖŞAP KAPILAR İÇİN. INTERIOR MORTISE LOCK (CONVEX TYPE LATCH) FOR WOODEN DOORS.
- 172 / 172 E**  
İÇ KAPI GÖMME KİLİDİ (STANDART TİP KARŐLIK VEYA AYARLI TİP KARŐLIK), AĖŞAP KAPILAR İÇİN. INTERIOR MORTISE LOCK (STANDARD TYPE STRIKING PLATE OR U.K. ADJUSTABLE TYPE STRIKING PLATE), FOR WOODEN DOORS.
- 172 - 312**  
İÇ KAPI GÖMME KİLİDİ (KAPI KOLU TAKIMLI), AĖŞAP KAPILAR İÇİN. INTERIOR MORTISE LOCK (WITH HANDLE SET), FOR WOODEN DOORS.
- 251**  
İÇ KAPI GÖMME KİLİDİ AĖŞAP KAPILAR İÇİN. ANAHTARSIZ.  
INTERIOR MORTISE LOCK, FOR WOODEN DOORS, WITHOUT KEY
- 251 WC**  
İÇ KAPI GÖMME KİLİDİ AĖŞAP WC KAPILAR İÇİN. INTERIOR MORTISE LOCK FOR WOODEN WC DOORS.
- 172 WC / 172 E WC**  
İÇ KAPI GÖMME KİLİDİ (STANDART TİP KARŐLIK VEYA AYARLI TİP KARŐLIK), AĖŞAP WC KAPILAR İÇİN. INTERIOR MORTISE LOCK (STANDARD TYPE STRIKING PLATE OR U.K. ADJUSTABLE TYPE STRIKING PLATE), FOR WOODEN WC DOORS, WITH BALL BEARING



- 169 R WC**  
İÇ KAPI GÖMME KİLİDİ (GENİŐ TİP) AĖŞAP WC KAPILAR İÇİN. RULMANLI  
INTERIOR MORTISE LOCK (WIDE TYPE), FOR WOODEN WC DOORS, WITH BALL BEARING.
- 149 WC**  
İÇ KAPI GÖMME KİLİDİ (GENİŐ TİP) AĖŞAP WC KAPILAR İÇİN. ROZETLİ KOLA UYGUN KİLİT.  
INTERIOR MORTISE LOCK (WIDE TYPE) FOR WOODEN DOORS, COMPATIBLE WITH HANDLE ESCUTCHEON
- 166 AR WC**  
İÇ KAPI GÖMME KİLİDİ (GENİŐ TİP), AĖŞAP WC KAPILAR İÇİN. RULMANLI.  
INTERIOR MORTISE LOCK (WIDE TYPE), FOR WOODEN WC DOORS, WITH BALL BEARING.
- 155 B**  
GÖMME KİLİT ALÜMİNYUM KAPILAR İÇİN MORTİSE LOCK FOR ALUMINIUM DOORS
- 269 WC**  
İÇ KAPI GÖMME KİLİDİ (DAR TİP), ALÜMİNYUM WC KAPILAR İÇİN  
INTERIOR MORTISE LOCK (NARROW TYPE) FOR PVC DOORS, WITH BALL BEARING
- 151 RP**  
İÇ KAPI GÖMME KİLİDİ (GENİŐ TİP), PVC KAPILAR İÇİN. RULMANLI  
INTERIOR MORTISE LOCK (WIDE TYPE) FOR PVC DOORS, WITH BALL BEARING



- 266 P**  
İÇ KAPI GÖMME KİLİDİ (DAR TİP), PVC KAPILAR İÇİN  
INTERIOR MORTISE LOCK (NARROW TYPE) FOR PVC DOORS
- 269 P WC**  
İÇ KAPI GÖMME KİLİDİ (DAR TİP) PVC, WC KAPILAR İÇİN.  
INTERIOR MORTISE LOCK (NARROW TYPE), FOR PVC, WC DOORS, MORTİSE LOCK
- 269 RP WC**  
İÇ KAPI GÖMME KİLİDİ (GENİŐ TİP), PVC WC KAPILAR İÇİN. RULMANLI.  
INTERIOR MORTISE LOCK (WIDE TYPE), FOR PVC WC DOORS, WITH BALL BEARING
- 150 PZW**  
SİLİNDİRLİ GÖMME KİLİT AĖŞAP KAPILAR İÇİN.  
MORTİSE LOCK WITH CYLINDER FOR WOODEN DOORS.
- 150 PZW 3M**  
SİLİNDİRLİ GÖMME KİLİT AĖŞAP KAPILAR İÇİN  
MORTİSE LOCK WITH CYLINDER FOR WOODEN DOORS
- 150 BB**  
İÇ KAPI GÖMME KİLİDİ AĖŞAP KAPILAR İÇİN.  
INTERIOR MORTISE LOCK FOR WOODEN DOORS.



**150 BAD**

İÇ KAPI GÖMME KİLİDİ  
AHSAP WC KAPILAR İÇİN.  
INTERIOR MORTISE LOCK  
FOR WOODEN WC DOORS.

**150 PZH**

SİLİNDİRLİ GÖMME KİLİT  
AHSAP KAPILAR İÇİN.  
MORTISE LOCK WITH  
CYLINDER. FOR WOODEN  
DOORS.

**301**

SÜRME KİLİT  
ALÜMİNYUM, PVC SÜRME KAPI  
VE PENCERELER İÇİN  
SLIDING LOCK  
FOR ALUMINIUM, PVC SLIDING  
DOORS AND WINDOWS.

**302**

SİLİNDİRLİ SÜRME KİLİT  
ALÜMİNYUM, PVC SÜRME  
KAPI VE PENCERELER İÇİN  
SLIDING LOCK WITH  
CYLINDER. FOR  
ALUMINIUM, PVC SLIDING  
DOORS AND WINDOWS.

**165**

KEPENK KİLİDİ  
SHUTTER LOCK

**101 G / S / F**

OTO EMNİYET KİLİDİ  
SİLİNDİRLİ (STANDART, SİSTEM,  
PRAZİS)  
CAR SECURITY LOCK  
WITH CYLINDER (STANDARD,  
SYSTEM, CROSS KEY TYPE)



**282 RD**

DÖNER SÜRGÜLÜ ÇELİK KAPI GÖMME  
KİLİDİ. RULMANLI.  
MORTISE LOCK WITH ROTATING  
DEADBOLT FOR STEEL DOORS. WITH  
BALL BEARING.

**287 D**

DÖNER SÜRGÜLÜ ÇELİK KAPI GÖMME  
EMNİYET KİLİDİ  
SAFETY MORTISE LOCK WITH  
ROTATING DEADBOLT FOR STEEL  
DOORS

**262 R**

CHAMPION KANCAÇI ÇELİK KAPI  
GÖMME KİLİDİ. RULMANLI  
MORTISE LOCK WITH CLAW TYPE  
DEADBOLT. FOR STEEL DOORS. WITH  
BALL BEARING

**267**

CHAMPION KANCAÇI ÇELİK  
KAPI GÖMME EMNİYET  
KİLİDİ  
SAFETY MORTISE LOCK  
WITH CLAW TYPE  
DEADBOLT

**252 R**

MONOBLOK ÇELİK KAPI  
GÖMME KİLİDİ. RULMANLI  
MORTISE LOCK FOR STEEL  
DOORS. WITH BALL  
BEARING.

**257**

PLUS ÇELİK KAPI GÖMME  
EMNİYET KİLİDİ  
SAFETY MORTISE LOCK FOR  
STEEL DOORS



**252 RL SET**

FİŞELİ ÇELİK KAPI GÖMME KİLİT SETİ  
DOUBLE-BIT KEY MORTISE LOCK SET  
FOR STEEL DOORS

**252 RL**

FİŞELİ ÇELİK KAPI GÖMME KİLİDİ.  
RULMANLI  
DOUBLE-BIT KEY MORTISE LOCK FOR  
STEEL DOORS. WITH BALL BEARING.

**257 L**

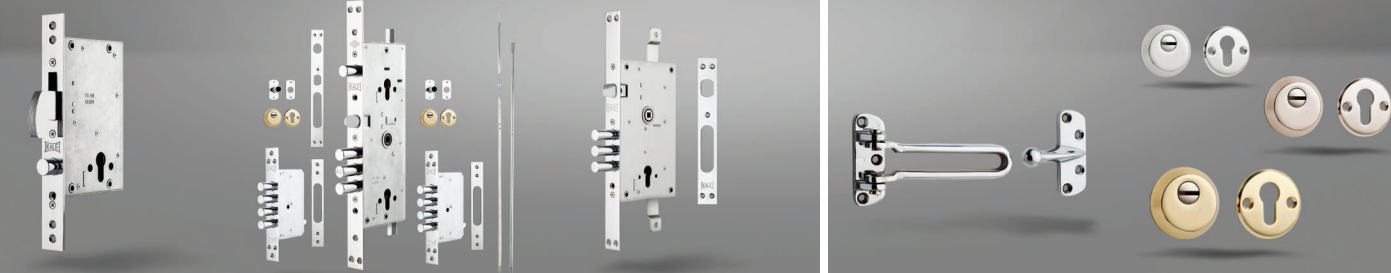
FİŞELİ ÇELİK KAPI GÖMME EMNİYET  
KİLİDİ  
DOUBLE-BIT KEY SAFETY MORTISE LOCK  
FOR STEEL DOORS

**276 T**

CHAMPION MULTİSİSTEM MERKEZİ  
KANCAÇI ÇELİK KAPI KİLİDİ. RULMANLI  
MULTI-POINT CENTRAL LOCKING  
SYSTEM WITH CLAW TYPE, DEADBOLT  
FOR STEEL DOORS. WITH BALL BEARING.

**276**

CHAMPION KANCAÇI ÇELİK KAPI  
GÖMME KİLİDİ. RULMANLI  
MORTISE LOCK WITH CLAW TYPE  
DEADBOLT. FOR STEEL DOORS.  
WITH BALL BEARING.



**277**

CHAMPION KANCAÇI ÇELİK KAPI  
GÖMME EMNİYET KİLİDİ  
SAFETY MORTISE LOCK WITH  
CLAW TYPE DEADBOLT. FOR  
STEEL DOORS

**256**

MULTİSİSTEM MERKEZİ ÇELİK KAPI KİLİDİ.  
RULMANLI  
MULTI-POINT CENTRAL LOCKING SYSTEM FOR  
STEEL DOORS. WITH BALL BEARING.

**352 R**

ÇELİK KAPI GÖMME KİLİDİ. RULMANLI  
KALE KİLİT MULTİSİSTEM MERKEZİ KİLİT  
SİSTEMİNE UYGUN.  
MORTISE LOCK FOR STEEL DOORS  
COMPATIBLE WITH KALE KİLİT MULTİ-  
POINT CENTRAL LOCKING SYSTEM.

**190 / 190 K / 190 SN /  
190 P / 190 AB**

EMNİYET KELEPÇESİ  
AHSAP, METAL VE ÇELİK KAPILAR İÇİN  
DOOR RETAINER  
FOR WOODEN, METAL DOORS AND  
STEEL DOORS

**500 / 500 K / 500 SN**

ÇELİK KAPI KİLİTLERİ İÇİN  
KORUYUCU ROZET  
SECURITY ESCUTCHEON FOR  
STEEL DOOR LOCKS



**511 / 511 K / 511 SN**

FİŞELİ ÇELİK KAPI KİLİTLERİ  
İÇİN KORUYUCU ROZET  
SECURITY ESCUTCHEON  
FOR DOUBLE-BIT KEY  
STEEL DOOR LOCKS

**502**

SİLİNDİR ROZETİ  
CYLINDER ROSETTE

**503**

SİLİNDİR ROZETİ  
DAR KİLİTLER İÇİN  
CYLINDER ROSETTE  
FOR NARROW TYPE  
LOCKS

**507**

DIŞTAN TAKMA EMNİYET  
VE TIRAJLI KİLİT ROZETİ  
FOR SURFACE MOUNT  
SAFETY AND RIM LOCKS

**509**

PRAZİS SİLİNDİR ROZETİ  
FOR CROSS KEY TYPE  
LOCKS



**162**

İÇ KAPI GÖMME KİLİT HAM  
ANAHTARI  
BLANK KEY FOR INTERIOR  
MORTISE LOCKS

**171**

İÇ KAPI GÖMME KİLİT HAM  
ANAHTARI  
BLANK KEY FOR INTERIOR  
MORTISE LOCKS

**176**

İÇ KAPI GÖMME KİLİT HAM  
ANAHTARI  
BLANK KEY FOR INTERIOR  
MORTISE LOCKS

**172 H**

İÇ KAPI GÖMME KİLİT HAM  
ANAHTARI  
BLANK KEY FOR INTERIOR  
MORTISE LOCKS

**160/2-160/3**

BİLYALI SİLİNDİR HAM  
ANAHTARI  
BLANK KEY FOR HIGH SECURITY  
CYLINDER



**161 F2/161 F3**

PRAZİS SİLİNDİR HAM ANAHTARI  
CROSS TYPE BLANK KEY

**161 / 1 - 2 - 3**

STANDART SİLİNDİR HAM ANAHTARI  
BLANK KEY FOR STANDARD CYLINDER

**168**

SİSTEM SİLİNDİR HAM  
ANAHTARI  
BLANK KEY FOR SYSTEM  
CYLINDER

**505 K**

FİŞELİ KİLİT HAM ANAHTARI  
BLANK KEY FOR DOUBLE-BIT  
KEY LOCKS



**305 / 305 S / 305 WC**

TAKIM KOL  
DIŞ, İÇ VE WC KAPI KİLİTLERİ İÇİN  
HANDLE SET  
FOR EXTERIOR, INTERIOR DOOR AND WC DOOR  
LOCKS

**417 / 417 S / 417 WC**

TAKIM KOL  
DIŞ, İÇ VE WC KAPI KİLİTLERİ İÇİN  
HANDLE SET  
FOR EXTERIOR, INTERIOR DOOR AND WC  
DOOR LOCKS

**312**

TAKIM KOL  
İÇ ODA KAPILARI İÇİN  
HANDLE SET  
FOR INTERIOR DOOR LOCKS